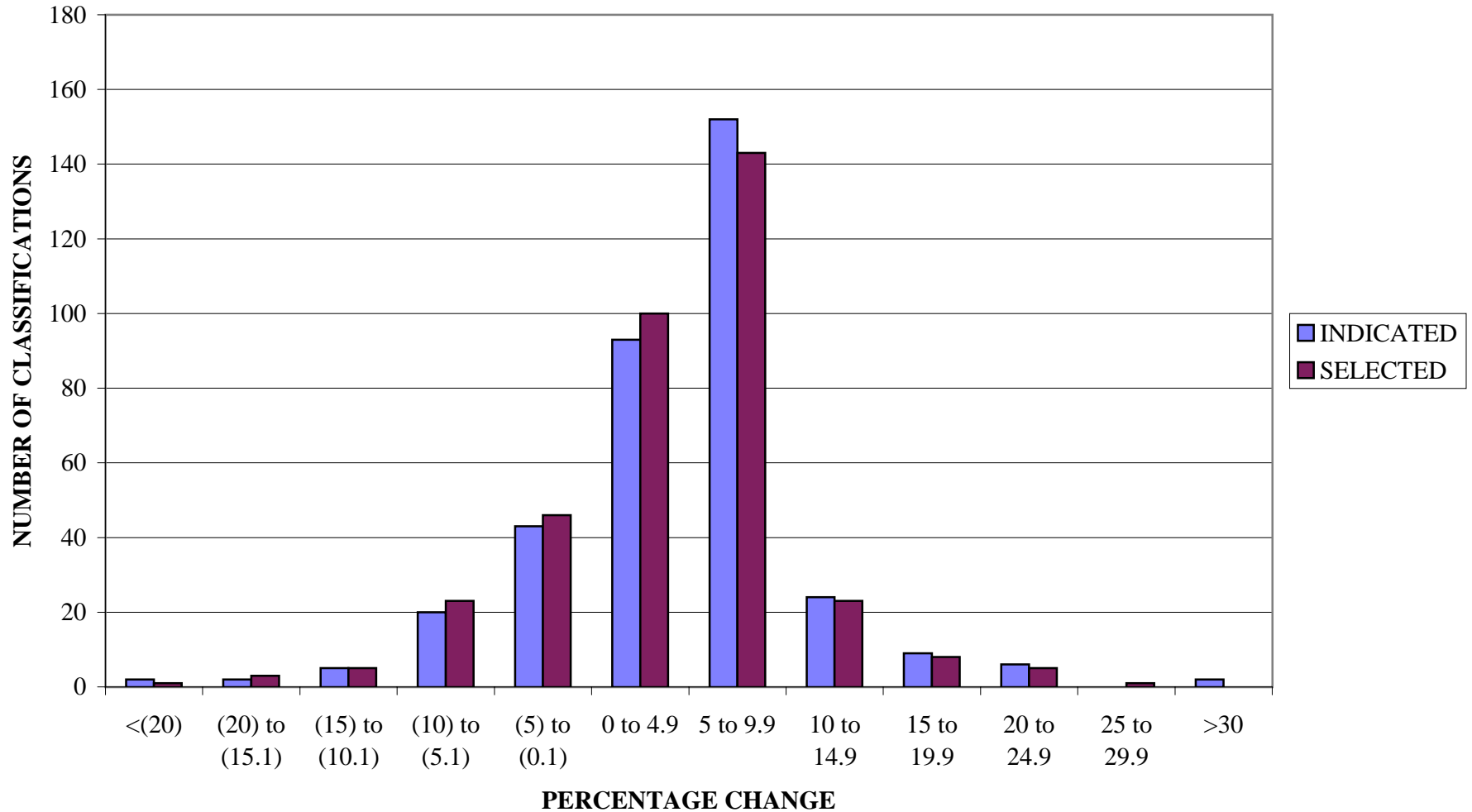


PENNSYLVANIA COMPENSATION RATING BUREAU

Distribution of Loss Cost % Changes

These percent changes are based on pre-surcharge loss costs.

**APRIL 1, 2004 LOSS COST FILING
PENNSYLVANIA COMPENSATION RATING BUREAU
DISTRIBUTION OF LOSS COST CHANGES (PERCENT)**



CLASSES CAPPED AT UPPER BOUND

CLASS	PRE-CAPPED % CHANGE	POST-CAPPED % CHANGE
0775	85.7	30.0