

PENNSYLVANIA COMPENSATION RATING BUREAU

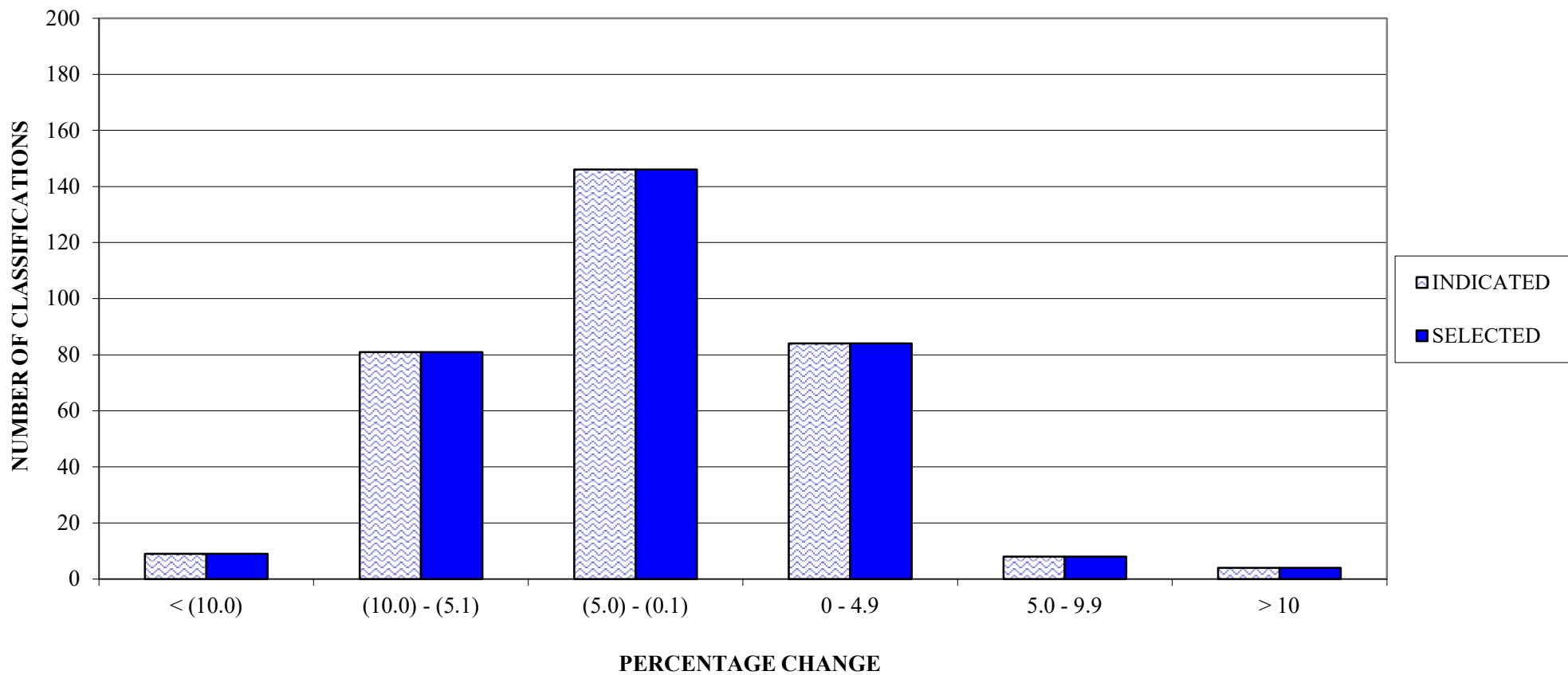
Distribution of Loss Cost % Changes

These percent changes are based on pre-surcharge loss costs.

This exhibit includes only information for the direct employment classes.

For information on the temporary staffing class changes, please refer to Exhibit 31.

PENNSYLVANIA COMPENSATION RATING BUREAU
April 1, 2021
LOSS COST FILING
DISTRIBUTION OF LOSS COST PERCENTAGE CHANGES (PRE-SURCHARGE)



NOTE: This exhibit excludes temporary staffing classes